



# STE. ANNE MUNICIPALITY

## Shelter in Place Presentation

### Is your family prepared to shelter in place at home for at least 72 hours?

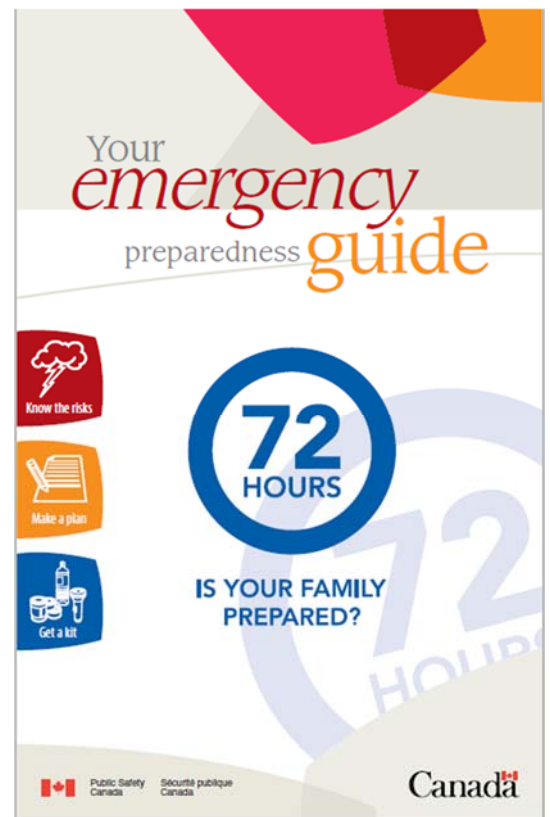
Please join Chrissy Bohemier, your Municipal Emergency Coordinator, for a virtual session regarding sheltering in place to learn more about:

- What does it mean to shelter in place?
- Knowing the risks that could affect you and your family.
- How to make a family plan.
- Putting together an emergency 72 hour kit for you and your family.

#### The session will be held on

- Thursday January 27, 2022
- 7 pm (virtually on Zoom)

Please register in advance and submit your questions to [acao@rmofsteanne.com](mailto:acao@rmofsteanne.com) to get the virtual meeting link



Download your copy of the 72 Hour Emergency Preparedness Guide from the RM of Ste Anne Website at [www.rmofsteanne.com](http://www.rmofsteanne.com) under the Resources Tab and by choosing Emergency Services