



STE. ANNE  
MUNICIPALITY

RM of Ste. Anne Newsletter  
October 2022

# Community CONNECTIONS

## FALL MEANS IT'S TIME FOR THE MUNICIPAL ELECTION... AND PROPERTY TAX PAYMENTS!



*Don't forget to vote on Wednesday, October 26th (or at the advance polls on Saturday, October 15th) and pay your property taxes before Monday, October 31, 2022.*

*Photo by Myriam Dyck*

## REGISTERED ELECTION CANDIDATES

We are pleased to announce the following candidates have registered with the SEO, Ernie Epp, for the October 26, 2022 Municipal Election:

### REEVE

Richard Pelletier  
Paul Saindon

### WARD 2

Kyle Waczko  
Jake Reimer

### 2022 CANDIDATES ELECTED BY ACCLAMATION

The RM of Ste. Anne would like to Congratulate the following Candidates who were elected by acclamation for the 2022 Municipal elections:

Ward 1 - Normandeau, Sarah  
Ward 3 - Wery, Brent  
Ward 4 - Ingles, Bradley  
Ward 5 - Sarrasin, Robert  
Ward 6 - Eros, Randy

### LUD OF RICHER COMMITTEE MEMBERS

Bremaud, Norm  
Lenton, John  
Ostrowski, Jessica

***Are you interested in what municipalities and councils do, as well as what are the responsibilities of council members and the role of administration?***

Please take a minute and watch this video which presents some key information about the election process for potential candidates:  
<https://www.gov.mb.ca/mr/mfas/election.html>

### MUNICIPAL ELECTION

Vote on October 26, 2022  
See the next page for your voting location

### ADVANCE POLLS

Saturday, October 15th, 2022  
8:00 a.m. to 8:00 p.m.  
RM Office - 395 Traverse Road

## CALENDAR

### RM of Ste. Anne

#### 2022 Council Meeting Dates

October 19, 6:00 pm  
November 9, 9:00 am  
November 30, 6:00 pm  
December 14, 9:00 am

### LUD of Richer Meeting Dates

November 2, 7:00 pm  
December 7, 7:00 pm

Meetings of the RM of Ste. Anne and Local Urban District of Richer are once again open to the public. Council meetings are held in the Council Chambers of the RM Office at 395 Traverse Road and continue to be recorded and livestreamed via [www.rmof-steanne.com](http://www.rmof-steanne.com). LUD of Richer Committee Meetings are held in the LUD Hall at 136 Dawson Road in the town of Richer.

### Elections Advanced Poll

October 15, 2022

### Election Day

October 26, 2022

### Tax Due Date

October 31, 2022

### Office Holiday Closures

December 23 to 27, 2022  
and December 29, 2022  
to January 2, 2023.

### LUD of Richer Garbage

Pickup Day - Fridays

# Municipal Election

October 26, 2022

General election for Council of the Rural Municipality of Ste. Anne.

## What do I need to know?

### ✓ Voting Options:

In person at either:

- Advance Poll, or
- Election Day

Mail-in Ballot:

- Residents can apply in writing to vote by sealed envelope. Please contact the RM Office for more information.

### Advance Polls:

Saturday, October 15th, 2022

8:00 a.m. to 8:00 p.m.

RM Office - 395 Traverse Road

### ✓ Do I need to register to vote?

- Yes. Being on the voters list is necessary for eligible residents who wants to run for office or vote for a candidate.

To be added to the voters list, please visit the RM Office or website.

### ✓ Where do I vote?

Wards 1/3/LUD:

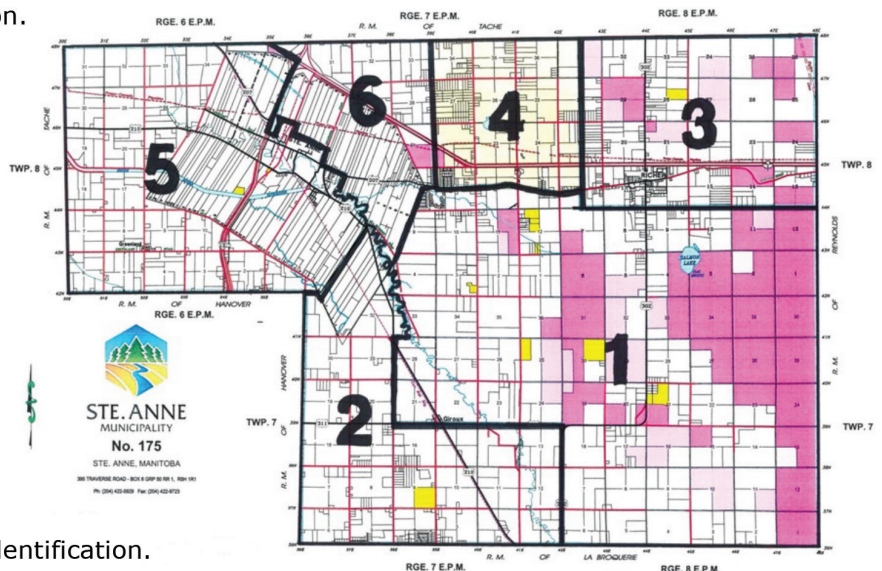
Richer Young at Hearts

Wards 2/5:

RM Office

Wards 4/6:

Paradise Village Rec. Centre



Voters will be required to produce identification.

## Interested in running for an elected position?

### **Registration Dates:**

- Reeve (Head of Council) May 1, 2022 - September 20, 2022
- Councillor June 30, 2022 - September 20, 2022

To obtain a registration package or more information regarding this election, please contact the RM office: 204 422 5929.

### **Senior Election Officer:**

Ernie Epp

1-204-823-2267

ernie.epp@waytogoconsulting.ca



# PAYING YOUR 2022 PROPERTY TAXES

**DUE DATE:** Before 4:30 pm on **Monday, October 31st, 2022**

**PAYMENTS** can be made at the Municipal Office during regular office hours by cash, cheque, debit or credit card.

**AFTER HOURS:** payments by cheque (include bottom portion of your tax statement along with Roll# in the memo field on cheque) can be deposited through the drop-off slot at the back entrance door to the east of the building.

**AUTOMATIC MONTHLY PROGRAM (CAFT):** We offer a monthly automatic withdrawal payment service. For details on this program, please contact our office.

**ONLINE BANKING:** If your financial institution is a Credit Union, including Caisse, TD Bank, or Scotiabank, then you can pay us through online banking. Please be sure to select the RM of Ste.

Anne and use your Roll number when sending the payment.

**CREDIT CARD PAYMENTS:** Paying by credit card can be done directly through our website, [www.rmofsteanne.com](http://www.rmofsteanne.com), or in our office. Using this service will require you to pay the credit card loading fees in addition to your tax payment.

Payments received after 4:30 pm on October 31, 2022, will be considered late. Please send your payment early to avoid any penalties, and note that we do accept post-dated cheques to help you avoid this (dated no later than October 31, 2022).

**FOR ALL PAYMENTS:** Please ensure payments are sent to the **RM of Ste. Anne** and not the Town of Ste. Anne (or other "Ste. Anne" districts across Canada).

***All payments must be made in Canadian Dollars.***

**LATE PENALTY:** A 1% penalty is applied to any overdue taxes on the first day of each month, compounded annually, until paid in full.

**ARREARS ON TAX BILL:** Amount of arrears shown on your tax statement includes penalties to **May 31, 2022**. Please call the office to get adjusted amounts with penalties if your bill includes overdue tax amounts.

**MAILING ADDRESS:** If you have not received your 2022 Property Tax Statement, please contact the Municipal Office to ensure we have your correct mailing address. Failure to receive the tax bill does not exempt a person from having to pay their taxes by the due date. If you have changed your mailing address, it is very important that you notify the Municipality as soon as possible.

**TAX SALE:** Properties with more than 2 years of outstanding taxes owing may be sold through the tax sale process. Special instructions will be given to affected property owners.

## SCHOOL TAXES

The Municipality has no authority over school taxes. Please contact the School Division Offices for any inquiries related to school taxes.

Seine River School Division  
204-878-4713  
Hanover School Division  
204-326-6471

For any questions regarding your property taxes or method of payment, please contact the Municipal Office at 204-422-5929 or [finance@rmofsteanne.com](mailto:finance@rmofsteanne.com).

## FREQUENTLY ASKED QUESTIONS

*I recently built a new home and have only received a property tax bill for the land. When can I expect a bill for the house?*

New homes are typically sent a supplementary tax bill. Supplementary tax bills are mailed out in Spring and Fall. Depending on the completion date of your home and/or if the home has been assessed, you may receive a tax bill for both the previous and current year.

*Are receipts automatically mailed?*

As the RM of Ste Anne is trying to minimize our carbon footprint, receipts may not be issued automatically. However, receipts are always available by contacting the office and requesting a copy or providing us with your email.

## GET MONEY BACK!!

### RESIDENTS OF STE. ANNE MUNICIPALITY HAVE ACCESS TO:

- A \$35 rebate for learn to swim lessons per level per child (up to age 14) per year. Child must reside in the RM of Ste Anne.
- A \$60 annual rebate for a Jake Epp Library Membership OR a free membership to the Bibliotheque Ste. Anne Library

### PROVINCIAL SCHOOL TAX REBATES AND CREDITS:

- **Education Property Tax Credit Advance (EPTCA)** (up to \$437.50) for your primary residence on school taxes only. This can be applied one of two methods:
  - Can be applied directly on your tax bill
  - OR claimed through your personal income tax return
- **Education Property Tax Rebate** will be a cheque mailed out by the Province of Manitoba with no need for an application. See <https://www.gov.mb.ca/edupropertytax/index.html> for more information.
- **Seniors Rebate** (based on income)
  - Must be claimed on personal income tax return

### Farmland School Tax Credit (for properties with a Farm Assessment Classification)

- An annual application must be made to the Manitoba Agricultural Services Corporation ([www.MASC.mb.ca](http://www.MASC.mb.ca))

# NEW CAO HIRED

On July 25, 2022, Council welcomed Mike McLennan to our administrative team as the RM of Ste. Anne's Chief Administrative Officer (CAO). The Chief Administrative Officer's role is to carry out the decisions of Council while managing the overall administration of the Municipality.

Mike comes to our organization with over 20 years of experience in public service and brings tremendous leadership skills to our team.



Mike McLennan, RM of Ste. Anne  
Chief Administrative Officer (CAO)

With the support of Council, staff, and our community, we have great confidence that Mike will help us carry out the Municipality's vision of providing an environment for safe, affordable, diverse lifestyles, while ensuring sustainability for future generations.

Welcome to the team,  
Mike!

# THE IMPORTANCE OF MAINTAINING YOUR DRIVEWAY

Did you know that the maintenance of your driveway plays a vital role to plan in your home's emergency preparedness? Here's a few things you can do to help us help you during an emergency at home.

## CIVIC ADDRESS SIGN

Your civic address sign is the blue sign on a post at the end of your driveway that identifies your property's civic number and the road name. Ex: 395 Traverse Road or 32007 Road 42E. When an emergency occurs, first responders (ambulance, fire fighters, police, etc.) will receive your address from the 911 dispatchers. This information will get them near your property, however for them to be able to find your driveway quickly, they need to see your address sign. You can help make sure they find you during your time of need by clearing the vegetation or any obstructions from around that driveway marker as well as any other maintenance to keep it visible from the roadway. If you don't have a civic address sign at the end of your driveway, please call us at 204-422-5929 or email us at [general@rmofsteanne.com](mailto:general@rmofsteanne.com).

## DRIVEWAY MAINTENANCE

Fire trucks and ambulances are larger and heavier than your average passenger vehicle. When these larger vehicles need to access your property to help you, there may be some obstacles and challenges that they might face, that your cars won't, such as:

**Overhanging Trees:** it's important that there is enough clearance for emergency vehicles to be able to travel down your driveway without being damaged if they encounter low-hanging branches along the way. Please ensure that there are no branches or shrubs around your driveway that could damage or pose a challenge for first responders to be able to confidently access your home.

**Surface maintenance:** As emergency vehicles can be quite heavy, please ensure there is sufficient structural integrity to your driveway to be able to bear this weight even under wet/spring conditions. This may mean adding more gravel, or improving your driveway with Geotech filter cloth to strengthen the driveway surface.

**Gates:** It is understandable that people want to protect their property with the installation and use of gates. Unfortunately, if the gate prevents entry onto your property by emergency services, then the risk to life and property increase tremendously. Because of this, we strongly encourage residents to consider other options for securing their properties.

## MOWING

Please be advised that the Municipality provides for roadside mowing once, sometimes twice per year. Should residents wish to have the vegetation mowed more frequently, then please feel free to do so at your own risk. Note that any changes to the slope or shape of the ditch is prohibited without municipal and provincial permission.

## SNOW REMOVAL

As winter is coming, we would like to remind everyone that snow removed from driveways must be stored onto private property and cannot be pushed across the roadway or amassed on the side of the road or in the ditches. Doing so creates a safety hazard, not only by reducing visibility, but also by creating ice mounds that can damage our graders. When graders drive down municipal roads, they do so at some speed in order to throw the snow further away from the road surface to reduce the accumulation and assist with road maintenance over the entire season. This can sometimes cause ice chunks to be thrown, which can be damaging. Please consider storing cars or other property further from the road allowance in order to help us better clear the roads without fear of damaging adjacent property.

***The Municipal Public Works and Emergency Responders will be able to help you better with your help by taking care of your driveway, civic sign visibility, and snow removal practices.***

# DID YOU KNOW?!?

**HOUSEHOLD GARBAGE:** Residents may drop off regular household waste only at the Steinbach Landfill but must pay a \$10.00 tipping fee per drop-off, unless weighing in.

**ELECTRONIC RECYCLING:** The 1st Tuesday of each month you can drop off any old electronics at 35042 PR 210 (the old Public Works Shop) Electronic Recycling Program. If it is rainy or rough weather, the bin will be available the following day (Wednesday).

**Friendly Reminder:** If you are throwing away your electronics, make sure all personal data is removed.

## What can you Recycle?

We collect:

Apple Mac Items & Computers (desktops, laptops and Notebooks)  
Network Equipment, Barcode Equipment  
Peripherals (keyboards, mice, CD/DVD Rom)  
Scanners, Printers, Servers, Hubs, Server Racks, Switches, UPS  
Monitors-CRT, LCD, PC Parts, Tablets, Toners and Cartridges  
Wires and cables, Fax machines, Gaming consoles  
Projection systems, Telecommunication equipment  
VCR/DVD, Cameras, Audio/stereo equipment  
Mobile phones, Phones, Satellite equipment, Wireless equipment  
Batteries, Software, Tapes

# Acceptable Items



SINGLE STREAM, NO-SORT RECYCLING IS EFFICIENT, IT SAVES TIME AND SPACE AND IT IS GOOD FOR THE ENVIRONMENT!

## RECYCLE RIGHT, MANITOBA

Include these items (rinsed and free of grease, food and other residue) in your single stream recycle bin – no sorting or bagging required.

### PLASTICS

**WHAT** Plastics labeled #1–7 including bottles, lids, containers, take-out food containers, clamshells and trays, #5 and #6 single serve coffee pods.

**HOW** Rinsed and free of grease, food and other residue.



### GLASS

**WHAT** Glass bottles and jars.

**HOW** Rinsed and free of grease, food and other residue.



### POLYCOAT

**WHAT** Boxed containers for beverages and soups.

**HOW** Rinsed and free of grease, food and other residue.



### METAL

**WHAT** Tin food cans, lids and beverage containers, aluminum cans and foil.

**HOW** Rinsed and free of grease, food and other residue.



### PAPER

**WHAT** Newspaper, magazines, printed paper and shredded paper.

**HOW** Shredded paper in a clear plastic bag. This is the only item that should be bagged.



### CARDBOARD

**WHAT** Corrugated cardboard, box board, paper board and cartons.

**HOW** No larger than 4' x 4' x 1'.



Everything has value!

Do you have items that are not included in single stream recycling – it doesn't mean they can't be recycled.

Talk to your Emterra Environmental representative for items like Christmas lights, ladders, lumber, metal and other items.

Emterra Environmental [www.emterra.ca](http://www.emterra.ca)  
1029 Henry Avenue @emterragroup  
Winnipeg MB  
Canada R3E 1V6  
204.772.0770





## *Did you know that in the RM of Ste. Anne...?*

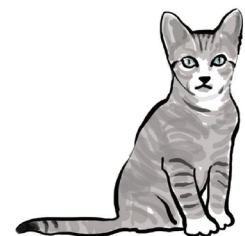


- Dogs are not allowed to run loose without being under direct control of their caregiver outside of their property
- Owners must remove animal waste from public and private property *immediately*
- Excessive barking or howling of dogs is not allowed
- Dogs must be taken care of and treated humanely at all times
- Some animals, reptiles and other living things are prohibited. Usually only cats, dogs, birds, fish, small rodents and small reptiles are allowed.



Any person who allows their animals to do these things may face fines or have it taken from them.

These rules also apply to all other animals. For more information visit [www.rmofsteanne.com](http://www.rmofsteanne.com) and view our Animal Control By-law under the resources tab or contact the RM Office at [general@rmofsteanne.com](mailto:general@rmofsteanne.com) or 204-422-5929.



**Contact RAMS for Animal Control:**

**Rural Animal Management Services (RAMS) 204-223-5521**

# THANK YOU, ROGER GODARD

Roger Godard was first elected to the Local Urban District (LUD) of Richer Committee during the 2010 elections and has served as the Committee Chair since then. In these past 12 years, with the benefit of his past experience working for Mines and Resources, as a business owner, and with the many key relationships he has built through those past experiences, numerous great projects have been successfully completed in the town of Richer.

The following notable accomplishments are just a few examples of those projects completed because of the hard work and dedication of the LUD of Richer Committee, led by Roger Godard:

- the paving of Therrien Drive, Godard Street, and Nault Street
- the construction or reconstruction of sidewalks along Dawson Road
- drainage improvements throughout Richer
- the bi-annual Community Clean-Up days
- the annual Holiday Yard Decorating Contest
- the development of the walking path connecting Therrien Drive to Dawson Road.

These are just a sample of the changes and projects that have occurred over the years at the direction of the Committee. These, along with other initiatives, have led to an increased number of residences and new businesses that have helped our town grow and bloom into the reality we see today.

Although Roger was elected a member of the Local Urban District of Richer Committee 12 years ago, he has been serving his community and making a difference through other community involvements for decades more as he has lived in and around Richer all his life. Roger holds Richer dearly in his heart. He truly cares about the residents of Richer and strives towards improving and beautifying this town while being mindful of the tax impact on the citizens of the LUD. Roger's pride in our community shines through him, and we know that he will continue to contribute to the town in other ways now that this chapter as an elected official is ending.

Roger Godard's leadership and behind-the-scenes work was instrumental in achieving this Committee's goals. As he has chosen not to run for re-election in 2022, we take this opportunity to recognize all of those valuable contributions



*Roger Godard, LUD of Richer Chair 2010 - 2022*

*Submitted photo*

and express our appreciation for all of the work and achievements made during his tenure on the Committee and as a valuable member of the community of Richer.

Roger, the Municipality thanks you for your years of dedicated service to the Local Urban District of Richer and wishes you all the best in your future endeavors. May this next chapter be the richest yet!

## MANY SUPPORTS AVAILABLE FOR OLDER ADULTS IN OUR COMMUNITY

Seine River Services for Seniors Inc. (SRS Inc.) is a non-profit resource organization for older adults that reside in the RM of La Broquerie and the RM and Town of Ste. Anne. We offer many services and resources to support older adults with independent living and healthy ageing.

Some examples (of services and resources-remove-redundant) are: assistance with obtaining E.R.I.K. kits, filling of various forms, foot care, transportation and/or friendly visits by volunteers plus programs and activities.

If you or someone you know have questions about our services and/or resources, please contact the Community resource coordinator, Mélanie Brémaud.

The office is open Monday to Friday, 9 a.m. to 4:30 p.m. Telephone: 204-424-5285 or email: [labseinerss@gmail.com](mailto:labseinerss@gmail.com).

Website coming soon! [www.seineriverservicesforseniors.ca](http://www.seineriverservicesforseniors.ca)

Follow us on Facebook: <https://www.facebook.com/SRSSENIORS>

Seine River Services  
for seniors inc.



Services Rivière Seine  
pour aînés inc.

**RM OF STE ANNE MUNICIPAL OFFICE:**

395 Traverse Road (Physical address)  
Box 6, Grp 50, RR 1 (Mailing address)  
Ste. Anne, MB R5H 1R1

Telephone: (204) 422-5929 Fax: (204) 422-9723  
[www.rmofsteanne.com](http://www.rmofsteanne.com)

Office Hours: Monday to Friday 8:30 am to 4:30 pm  
Closed on Holidays

**For specific inquiries, the following  
Administrative Staff may be contacted:**

**Chief Administrative Officer** - Mike McLennan  
[cao@rmofsteanne.com](mailto:cao@rmofsteanne.com)

**Legislative Officer** - Nadine Vielfaure  
[acao@rmofsteanne.com](mailto:acao@rmofsteanne.com)

**Operations Manager** - Kevin Medeiros  
[pw@rmofsteanne.com](mailto:pw@rmofsteanne.com)

**Finance Officer** - Tiana Bohemier  
[finance@rmofsteanne.com](mailto:finance@rmofsteanne.com)

**Finance Administrative Assistant** - Colleen Maurice  
[info@rmofsteanne.com](mailto:info@rmofsteanne.com)

**Development Officer** - Irina Poplavski  
[development@rmofsteanne.com](mailto:development@rmofsteanne.com)

**Planning Assistant** - Colette Martens  
[admin@rmofsteanne.com](mailto:admin@rmofsteanne.com)

**Administrative Assistant** - Danielle Vandale  
[reception@rmofsteanne.com](mailto:reception@rmofsteanne.com)

**RM OF STE. ANNE COUNCIL**

**Reeve:** Paul Saindon - 204-422-6755

**Councillors:**

Ward 1 - Sarah Normandeau

[ward1sarah@outlook.com](mailto:ward1sarah@outlook.com) / 204-392-6900

Ward 2 - Jake A. Reimer 204-346-0147

Ward 3 & LUD Council Rep - Brent Wery  
[bcwery@hotmail.com](mailto:bcwery@hotmail.com) / 204-371-7370

Ward 4 - Brad Ingles

[ward4rmsteannebrad.i@gmail.com](mailto:ward4rmsteannebrad.i@gmail.com) / 204-793-0671

Ward 5 - Robert Sarrasin

[robert.rm.steanne@gmail.com](mailto:robert.rm.steanne@gmail.com) / 204-791-7735

Ward 6 - Randy Eros

[eros@mts.net](mailto:eros@mts.net) / 204-371-2959

**LUD COMMITTEE MEMBERS:**

Roger Godard - 204-422-9369 / 204-371-6475

Norm Bremaud - 204-371-9282

John Lenton - 204-422-8496 / 204-371-1674

**RCMP:** Steinbach Detachment - 204-326-4452

During an emergency, dial 911 / 204-326-1234

**RAMS Animal Control Officer:** 204-223-5521

**Municipal Emergency Coordinator** - Chrissy Bohemier  
[mec@rmofsteanne.com](mailto:mec@rmofsteanne.com) / 204-381-8962

**RICHER FIRE DEPARTMENT**

Richer Fire Department - for questions on burn bans or burn permits - [richerchief@rmofsteanne.com](mailto:richerchief@rmofsteanne.com) / 204-422-5966

# ATTENTION LAND OWNERS

Do you live on an acreage? Would you like to contribute to improving our environment and protecting our watersheds?

Much of our hope in the battle for climate resiliency and the preservation of our natural environment is laid at the feet of governments, corporations and farmers. However, as owners of acreages and smaller parcels of land, you can make a significant difference in protecting our waterways, native habitat and battling climate change and at the same time feeling good and having some fun in what you are doing.

The Seine Rat Roseau Watershed District (SRRWD) has information, expertise and in some cases funding to make positive changes. The SRRWD works with landowners in erosion protection, water retention, preservation of wetlands and returning marginal land into land that will support natural environment.

If you realize cutting lawn is not environmentally friendly, you would like to see more trees and wildlife or you are just unhappy about how your acres are being used, SRRWD may be able to help.



## SEINE RAT ROSEAU

WATERSHED DISTRICT

**Check out our website  
at [srrwd.ca](http://srrwd.ca) or give us a  
call at 204-326-1030.**

154 Friesen Avenue  
Steinbach, MB, R5G 0T5  
[info@srrwd.ca](mailto:info@srrwd.ca)



Owners of acreages and smaller parcels of land can make a significant difference in protecting our waterways, native habitat and battling climate change.  
*Photo courtesy srrwd.ca*

## RICHER FIRE DEPARTMENT: FIRE PREVENTION WEEK

Greetings from your local, friendly fire fighters! Fall is officially upon us and we thought this would be a great time to touch base on a few safety topics that the cold weather brings, especially since Fire Prevention Week is October 9th – 15th – “Fire won’t wait. Plan your escape!”

This year’s theme works to educate everyone about simple but important actions they can take to keep themselves and those around them safe from home fires. Having multiple discussions with your family about what to do in the event disaster strikes can make all the difference in reaction time. If you make a plan, practice that plan every few months and keep copies of the plan around the home, your family will know what to do in the event of a fire.

Here is a link to a template for a fire escape plan as well as a checklist of how to build your own plan - [https://firecomm.gov.mb.ca/docs/home\\_fire\\_escape\\_plan.pdf](https://firecomm.gov.mb.ca/docs/home_fire_escape_plan.pdf)

Now is also the time of year when we start up our furnaces for the first time in months; getting your heating appliances serviced and cleaned at the beginning of the season is the best way to prevent a fire from happening and to keep the equipment running efficiently. Space heaters can also be nice for warming up on a cold evening but be sure to keep them clean and clear of any debris or objects and be careful to not overload the outlet; plug it directly into the outlet and do not use extension cords or multiple items on the same source.

Traffic has also increased quite a bit from what we’ve been used to for the last 2-3 years, given that school is now back in full swing and people are not working from home as much. Be more aware of your surroundings near school zones, be cautious of school buses coming to a stop on the roadways and heightened animal activity near dawn and dusk.

Keep safe and as always, it is a pleasure to serve our community!