

**Attn: Residents of the RM of Ste. Anne**

**Re: Public Survey on Potential Wastewater System in Richer**

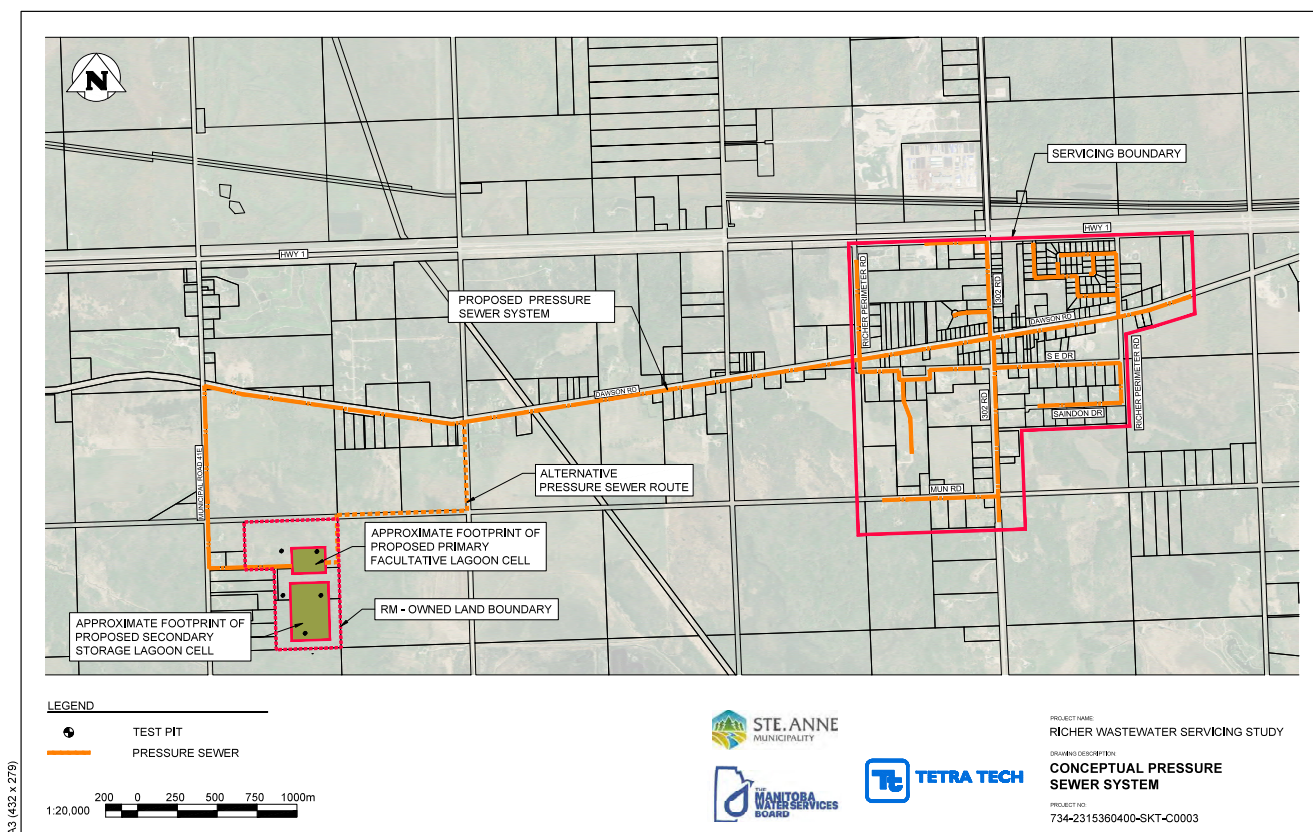
**Date: April 1, 2025**

The Rural Municipality (RM) of Ste. Anne is seeking public feedback on having a sewer system to service the Local Urban District (LUD) of Richer and immediate surrounding area (see image below). Tetra Tech. Canada Inc. has prepared a feasibility study to assess potential options and locations for the sewer system and associated lagoon, in addition to preliminary estimates of capital costs.

Please visit the following link [rmofsteanne.com/main.php?p=21](http://rmofsteanne.com/main.php?p=21) to access the full feasibility study, and feel free to contact the municipal office at [general@rmofsteanne.com](mailto:general@rmofsteanne.com) with any follow-up questions you might have on this study.

Please note Council **has not** made any financial commitments on moving forward with building a sewer system. Prior to taking any actions, Council wants feedback from those directly impacted. As such, the following Frequently Asked Questions and Survey Questionnaire are intended to:

- 1) Provide information to residents on the expected costs, impacts, and benefits of building a sewer system.
- 2) Obtain informed feedback from residents on their support or opposition to building a sewer system.



## How is wastewater currently treated in the LUD of Richer?

Currently, all properties in Richer are serviced by individual on-site septic tank and field, or holding tank. Wastewater is then collected by private septic haulers and trucked to the RM's lagoon located near the Town of Ste. Anne, about 20 km west of Richer.

---

## What is the expected capital cost of building a sewer system & associated lagoon?

The total cost of construction of the system proposed in the 2024 study is expected to be in the range of \$16-20 million.

---

## Who will pay for the sewer system?

To minimize the financial burden placed on ratepayers, the RM's intent is to have a significant portion of the total cost funded by the provincial and federal government based on funding currently available for these types of projects. We anticipate being able to have at least 50% of the cost covered by government grants. Staff and Administration will make applications for all funding opportunities available to reduce the financial burden on the taxpayers who will have to pay for the balance.

---

## How will the Municipality pay for the sewer system?

There is currently limited funding available in municipal reserves to pay for a wastewater project like this. As a result, it is expected that a municipal debenture (or loan) will be required to complete a project of this scale. Annual payments on this loan would then be collected from property owners through taxes, over 25 years.

---

## How much will I pay?

Based on 2024 estimates, LUD residents would pay an estimated **\$2,500-\$3,000 per year for 25 years**. Costs may vary depending on the type/condition/location of your existing tank. Costs will be lower if more grant funding is received, but higher if funding is reduced. Additional costs include a municipal at-large contribution (applied through property taxes based on assessment).

---

## What are the potential impacts of a municipal sewer system?

### A. Economic Benefits

- 1) Increased attractiveness for business and housing development – Fully serviced lots are more appealing to businesses that require high volumes of water (car wash, manufacturers, technology, hotels, etc.), while allowing smaller lots, additional dwellings, and additional types of housing to be built (apartments, assisted living facilities, etc.).
- 2) Increased household savings for those on holding tanks – The cost of new infrastructure will be offset over time by not having to have holding tanks serviced.

### B. Environmental Benefits

- 1) Improved groundwater quality – Sewer systems ensure the quality of groundwater is protected by lowering the risk of drinking water contamination associated with holding tanks and septic field pollution.

- 2) Higher quality roads – Eliminating the need to frequently haul septic waste will reduce truck traffic on municipal roads, and therefore the associated ‘wear and tear’ on roads from these heavy trucks, especially during spring road restrictions.
- 3) Lowering greenhouse gas emissions – Reduced trucking requirements hauling septage from Richer to the lagoon adjacent to the Town of Ste. Anne.

### C. Community Benefits

- 1) Increased Subdivision Possibilities – A sewer system will allow for new lots smaller than 2 acres. This means that current lands will be able to be further subdivided in Richer as the existing provincial requirement to have 2 acres of land for a septic field will no longer apply.
- 2) Improved community assets – An increase in the number of properties within the same geographic area allows for more efficient municipal services. This will generate additional tax revenue for the RM and LUD to reinvest into services such as roads, sidewalks, recreation and other services and programs.

### D. Costs

- 1) Higher home insurance rates.
- 2) Landscaping costs to remediate underground work.
- 3) Higher taxation costs to Richer residents over the span of the 25-year loan.

### E. Obligation to Connect

- 1) All currently developed properties (those that already have a home or business) will have to connect to the municipal sewer line no more than 10 years after the sewer system is installed.
- 2) Developers of all new subdivisions will need to engineer and install municipal sewer lines to each new lot being created in that subdivision, at their cost (which will then increase the price of those new lots in Richer).

---

### What were the results of the Strategic Plan survey related to wastewater infrastructure?

- 32% of the 79 respondents ranked the municipal sewer system as a **“high”** priority vs. 31% who ranked the municipal sewer system as a **“low”** priority.
- Construction of a sewer system ranked as the second highest priority for capital investments to promote economic development.
- Some Richer residents spend upwards of **\$500-\$1000+** per year on hauler services.
- There is a strong desire by the community to increase employment opportunities and affordable housing options, in addition to better recreation facilities, **all of which depend on having a municipal wastewater system.**

**Council has not made any decisions regarding the possibility of having a municipal sewer system in Richer. Please respond to the questionnaire on the following page to help Council understand your opinions as they weigh what direction should be taken regarding an LUD of Richer sewer system.**

## Questionnaire

### 1. Are you in support of a municipal sewer system for the LUD and RM?

☐ Yes☐ No☐ Depends on how much it costs me personally:

### 2. What do you see as the benefit of a municipal sewer system? (Select all that apply)

☐ Maintaining groundwater quality☐ Economic growth☐ Residential growth☐ Population growth☐ Cost savings overall

### 3. What concerns do you have about a municipal sewer system? (Select all that apply)

☐ Cost to connect☐ Cost to pay off debt for investment☐ Repair the property after the installation☐ Cost to maintain

### 4. Do you have any questions you would like answered before Council decides on this?

### 5. Do you have any suggestions for Council before they make a decision on this?

The Municipality will be accepting survey responses from April 1, 2025 to May 2, 2025.  
Please submit completed surveys to one of the following locations:

#### Municipal Office:

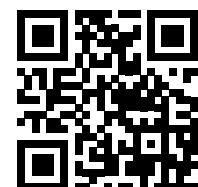
395 Traverse Road, Box 6, Grp 50,  
RR 1, Ste. Anne, MB R5H 1R1

#### Burnell's Food Plus:

8 Dawson Rd E, Richer,  
MB R0E 1S0

#### Complete the survey online:

<https://arcg.is/OTLieL>



#### STE. ANNE MUNICIPALITY

395 Traverse Road, Box 6, Grp 50, RR 1  
Ste. Anne, MB R5H 1R1  
E: [general@rmofsteanne.com](mailto:general@rmofsteanne.com)  
T: 204-422-5929  
[rmofsteanne.com](http://rmofsteanne.com)