



## **NOTICE OF PUBLIC HEARING**

### **Conditional Use #05-24**

The Rural Municipality of Ste. Anne, under the authority of *The Planning Act*, will hold a PUBLIC HEARING at the Municipal Office Council Chambers at the address shown above on **Wednesday, April 24, 2024** at **6:30pm** in respect to the following matter:

<b>FILE #:</b>	Conditional Use #05-24
<b>ROLL #:</b>	31300.000
<b>SUBJECT:</b>	Conditional Use: To allow for existing Detached Secondary Suite
<b>ZONED:</b>	Agriculture
<b>LOCATION:</b>	38110 Road 38E; NE 17-7-7E – See Map on reverse
<b>FOR INFORMATION CONTACT:</b>	Hadiseh Bajelan, M.C.P, M.Arch, Development Officer E <a href="mailto:development@rmofsteanne.com">development@rmofsteanne.com</a> P 204-422-5929

---

**REPRESENTATION OPTIONS:** Council will hear any person who wishes to make representation, ask questions or register an objection regarding this subdivision application. Individuals who plan to make a representation can do so by:

- 1- Attending the hearing: In person; or Virtually
- 2- Providing a written submission: By email, mail, or fax to the addresses listed above.

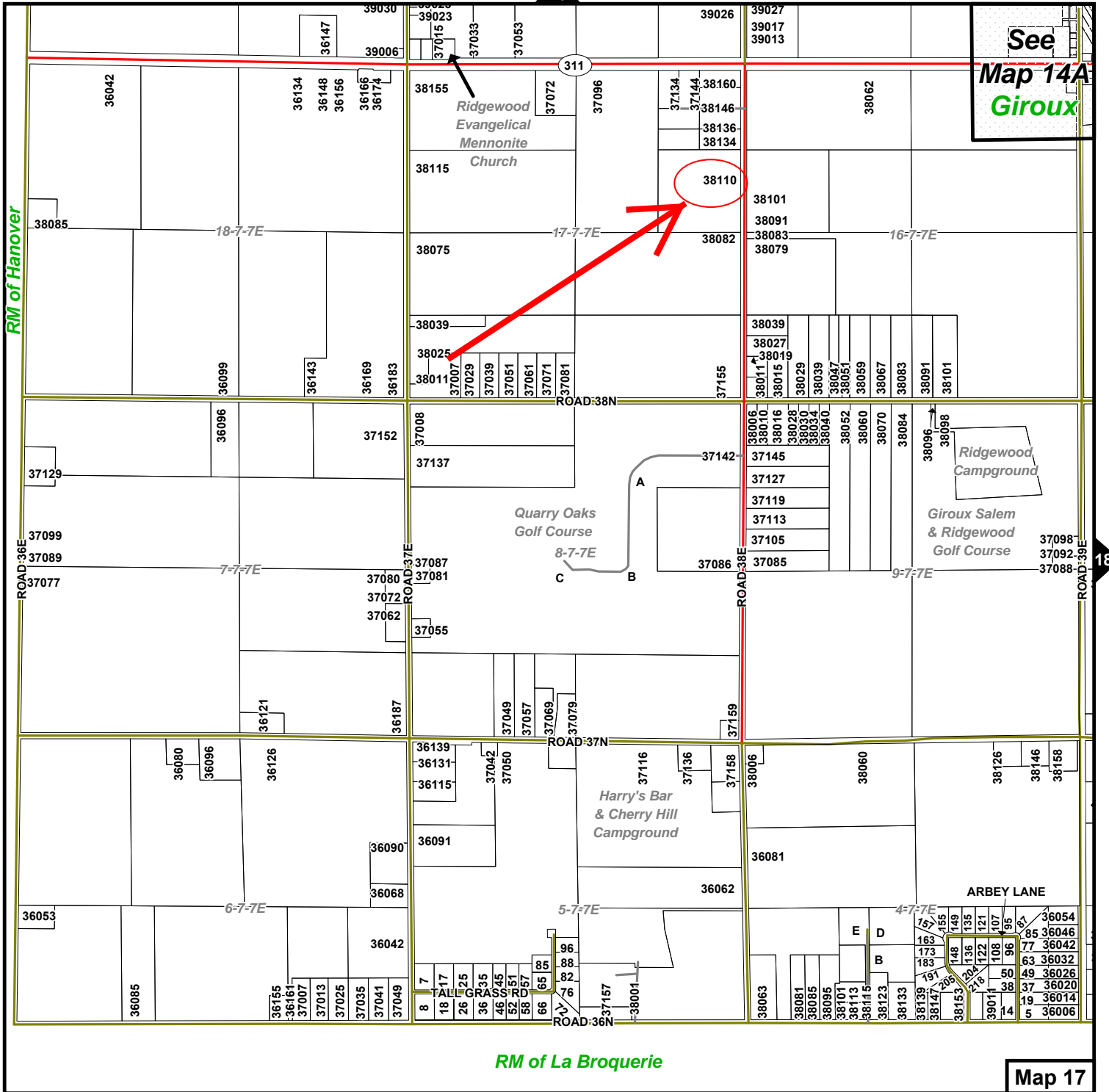
Please note the following:

The deadline for submitting a letter and requesting the link to the virtual meeting is Wednesday, April 24, 2024, at 12:00 pm. Please email to [development@rmofsteanne.com](mailto:development@rmofsteanne.com).

Written submissions received at the Municipal Office will be read aloud during the Hearing. Anonymous submissions will not be accepted.

---

A copy of the documents related to the matter to be considered at the hearing may be inspected at the municipal office during normal office hours, 8:30 am – 4:30 pm, Mon. to Fri. Documents can be provided in alternate formats upon request.



See  
**Map 14A**  
**Giroux**

RM of La Broquerie

Map 17